

TOOL QUOTE

INTERACTIVE QUOTING FOR TOOLMAKERS

- ✓ **ToolQuote** is an Interactive mold quoting software tool that automates and organizes quoting for mold makers
- ✓ **ToolQuote** has a user friendly and powerful graphic interface that quickly creates a visualization of mold layouts
- ✓ **ToolQuote** also has a user definable database that interacts with the graphic interface to quickly calculate costs

TOOL QUOTE
INTERACTIVE QUOTING FOR TOOLMAKERS

JDLTech.ca
JDL Technical Services

Key Features of ToolQuote

Simple to Setup & Use

Auto Tool Layout Creation

Automate & Organize Your Quotes

Automatic Calculation of Steel Sizes and Costs

Print & Email Quotes Directly from ToolQuote

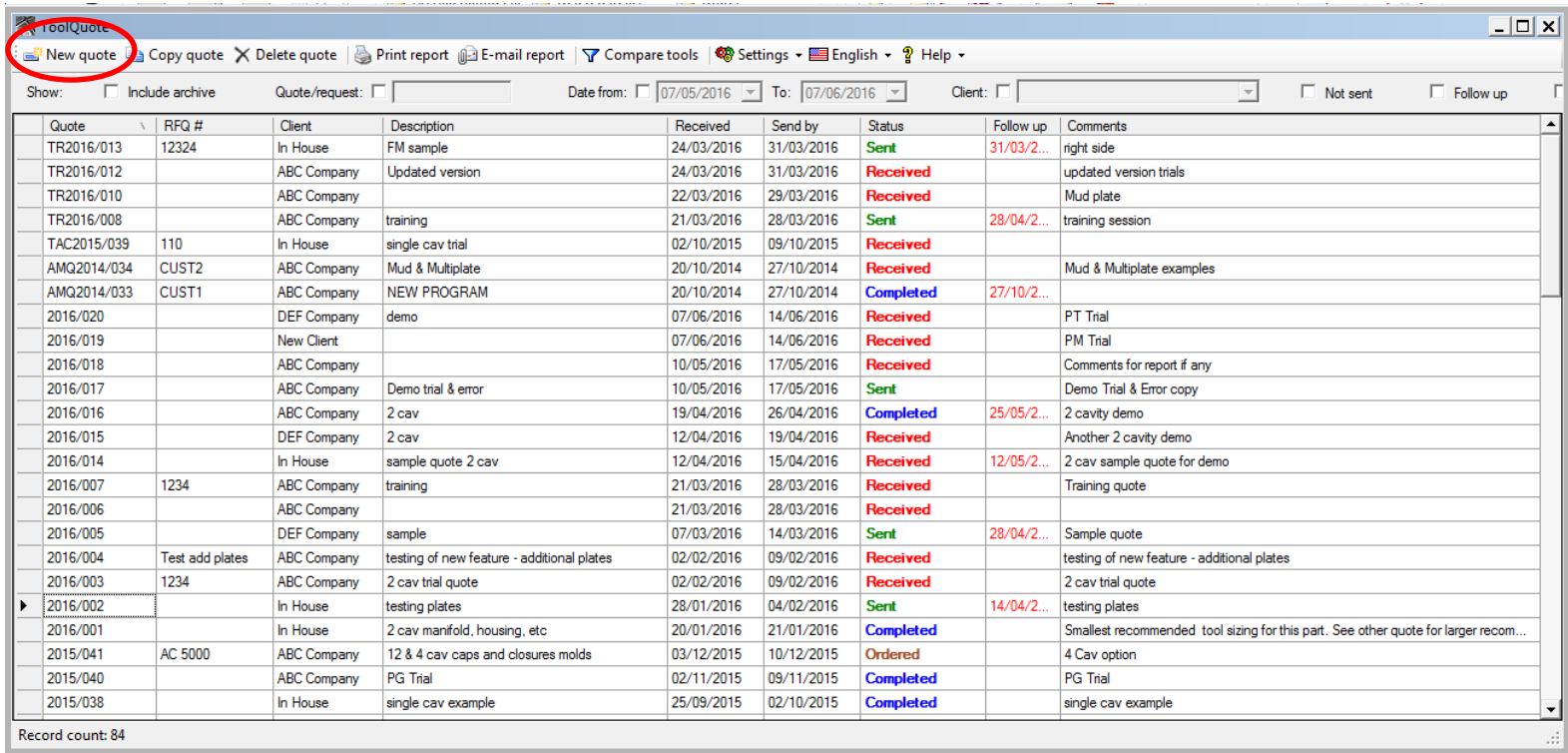
Add Actual Costs for Future Comparison

Filter and Compare Past Quotes

Add Photos to Tool Layout

User Definable Database

The step-by-step quote process with **ToolQuote**: Step 1 – Create new quote



The screenshot shows the ToolQuote application window. The menu bar includes 'New quote' (circled in red), 'Copy quote', 'Delete quote', 'Print report', 'E-mail report', 'Compare tools', 'Settings', 'English', and 'Help'. Below the menu bar, there are filters for 'Show:' (Include archive), 'Quote/request:', 'Date from:' (07/05/2016), 'To:' (07/06/2016), 'Client:', 'Not sent', and 'Follow up'. The main area contains a table of quotes with the following columns: Quote, RFQ #, Client, Description, Received, Send by, Status, Follow up, and Comments.

Quote	RFQ #	Client	Description	Received	Send by	Status	Follow up	Comments
TR2016/013	12324	In House	FM sample	24/03/2016	31/03/2016	Sent	31/03/2...	right side
TR2016/012		ABC Company	Updated version	24/03/2016	31/03/2016	Received		updated version trials
TR2016/010		ABC Company		22/03/2016	29/03/2016	Received		Mud plate
TR2016/008		ABC Company	training	21/03/2016	28/03/2016	Sent	28/04/2...	training session
TAC2015/039	110	In House	single cav trial	02/10/2015	09/10/2015	Received		
AMQ2014/034	CUST2	ABC Company	Mud & Multiplate	20/10/2014	27/10/2014	Received		Mud & Multiplate examples
AMQ2014/033	CUST1	ABC Company	NEW PROGRAM	20/10/2014	27/10/2014	Completed	27/10/2...	
2016/020		DEF Company	demo	07/06/2016	14/06/2016	Received		PT Trial
2016/019		New Client		07/06/2016	14/06/2016	Received		PM Trial
2016/018		ABC Company		10/05/2016	17/05/2016	Received		Comments for report if any
2016/017		ABC Company	Demo trial & error	10/05/2016	17/05/2016	Sent		Demo Trial & Error copy
2016/016		ABC Company	2 cav	19/04/2016	26/04/2016	Completed	25/05/2...	2 cavity demo
2016/015		DEF Company	2 cav	12/04/2016	19/04/2016	Received		Another 2 cavity demo
2016/014		In House	sample quote 2 cav	12/04/2016	15/04/2016	Received	12/05/2...	2 cav sample quote for demo
2016/007	1234	ABC Company	training	21/03/2016	28/03/2016	Received		Training quote
2016/006		ABC Company		21/03/2016	28/03/2016	Received		
2016/005		DEF Company	sample	07/03/2016	14/03/2016	Sent	28/04/2...	Sample quote
2016/004	Test add plates	ABC Company	testing of new feature - additional plates	02/02/2016	09/02/2016	Received		testing of new feature - additional plates
2016/003	1234	ABC Company	2 cav trial quote	02/02/2016	09/02/2016	Received		2 cav trial quote
2016/002		In House	testing plates	28/01/2016	04/02/2016	Sent	14/04/2...	testing plates
2016/001		In House	2 cav manifold, housing, etc	20/01/2016	21/01/2016	Completed		Smallest recommended tool sizing for this part. See other quote for larger recom...
2015/041	AC 5000	ABC Company	12 & 4 cav caps and closures molds	03/12/2015	10/12/2015	Ordered		4 Cav option
2015/040		ABC Company	PG Trial	02/11/2015	09/11/2015	Completed		PG Trial
2015/038		In House	single cav example	25/09/2015	02/10/2015	Completed		single cav example

Record count: 84

Click on 'New Quote'

Note: Overview of previous quotes with status, follow-up dates and comments

ToolQuote

Print calculation Send by e-mail Copy part Change rate Calculate costs Delete part External quote Close Status: Received

Quote #: 2016/021 RFQ #: RFQ - 1250 Client: In House Description: Reflector Mold - H13 - 2 cav Received: 07/06/2016 Send by: 14/06/2016 Files: Calculation 2016-021.pdf JDL Quote template.xlsx

Calculation finished: 18/08/2016 Quote sent: 18/08/2016 Ordered: 18/08/2016 Archive: Follow up: 28/06/2016

Tools	Drawing #	Description	Tool profile	Part type	Complexity	Cavities	Sliders	Holder	Mat. cav.
*	131415	2 cav Reflector Mold - H13	H13 MOLD - Medium	Reflector	3	0	0		

Tool positions / Materials:														
Part	#	Pcs	Material	X	Y	Z	Weight/pc	Weight (lb)	Price/lb	Mat. costs	Hours/pc	Hours	Hourly rate	Price
*								0.0		0.00		0		0.00

Labour Hrs / Machine Hrs:				
Labour / Machine	Comments	Hours	Hourly rate	Price
*		0		0.00

Purchased items:					
Description	Supplier	Comments	Pcs/units	Price/unit	Price
*					0.00

Summary

Material: Price: 0.00 Profit: 10% Total: 0.00 Price ordered: 0.00 Dimensions: X Y Z

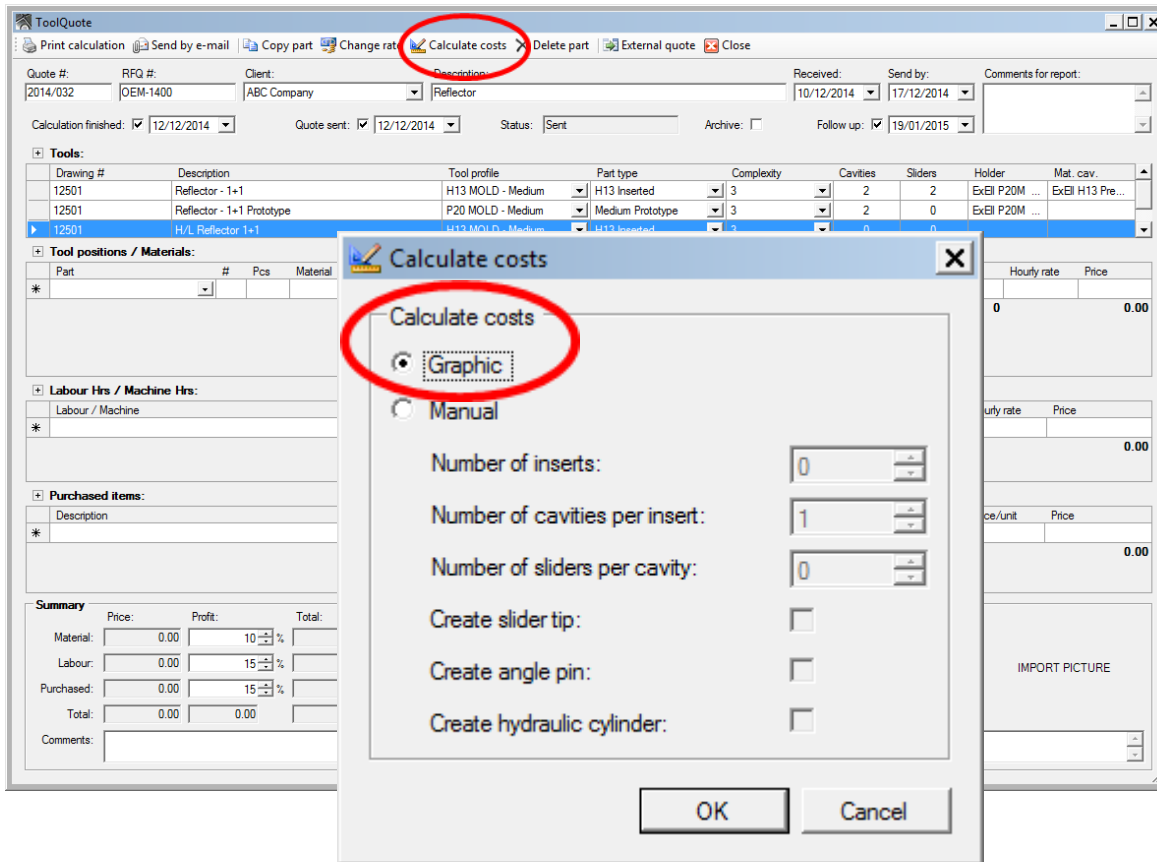
Labour: 0.00 Profit: 0% Total: 0.00 Sliders: 0 IMPORT PICTURE

Purchased: 0.00 Profit: 15% Total: 0.00 % for stress relief / heat treating: 0% Hrs: 0

Total: 0.00 Profit: 0.00 Total: 0.00 Material for stress relief / heat treating: 0.0 Weeks: Comments for report: Sample quote for demo purposes

Comments: This is a sample report for demo purposes only

Step 2 - enter basic quote and part data, select a tool profile, part type and tool complexity. You may also enter rec'd date, a quote send by date, follow-up date and some comments.



Step 3 - You have the option to 'picture' your mold build or it can be done manually – but once you see the ease of the automatic graphic representation, you'll never go manual! Select 'Calculate Costs' and then 'Graphic' to get your calculation.

Tool Parameters | Accessories

Cavity / insert shape: Square X Square Y Square Z

Cavity size: X: 8.00 Y: 5.00 Z: 4.00

Insert fixed size: Fixed side: 0.00 0.00 0.00 Moving side: 0.00 0.00 0.00

Holder fixed size: Fixed side: 0.00 0.00 0.00 Moving side: 0.00 0.00 0.00

Number of inserts: 2 Number of rows: 1

Number of cavities per insert: 1 Number of rows: 1

Material around cavities: 3.00 3.00 2.00

Material around inserts: 4.00 4.00 2.00

Material between cavities: 2.00 2.00

Material between inserts: 0.00 0.00

Injection hole diameter: 1.00 Center

Create tool

Machines

Company: ABC Company

Machines: 1000T 1500T 175T 2200T 250T 3000T 400T 500T 750T

Show machine platen

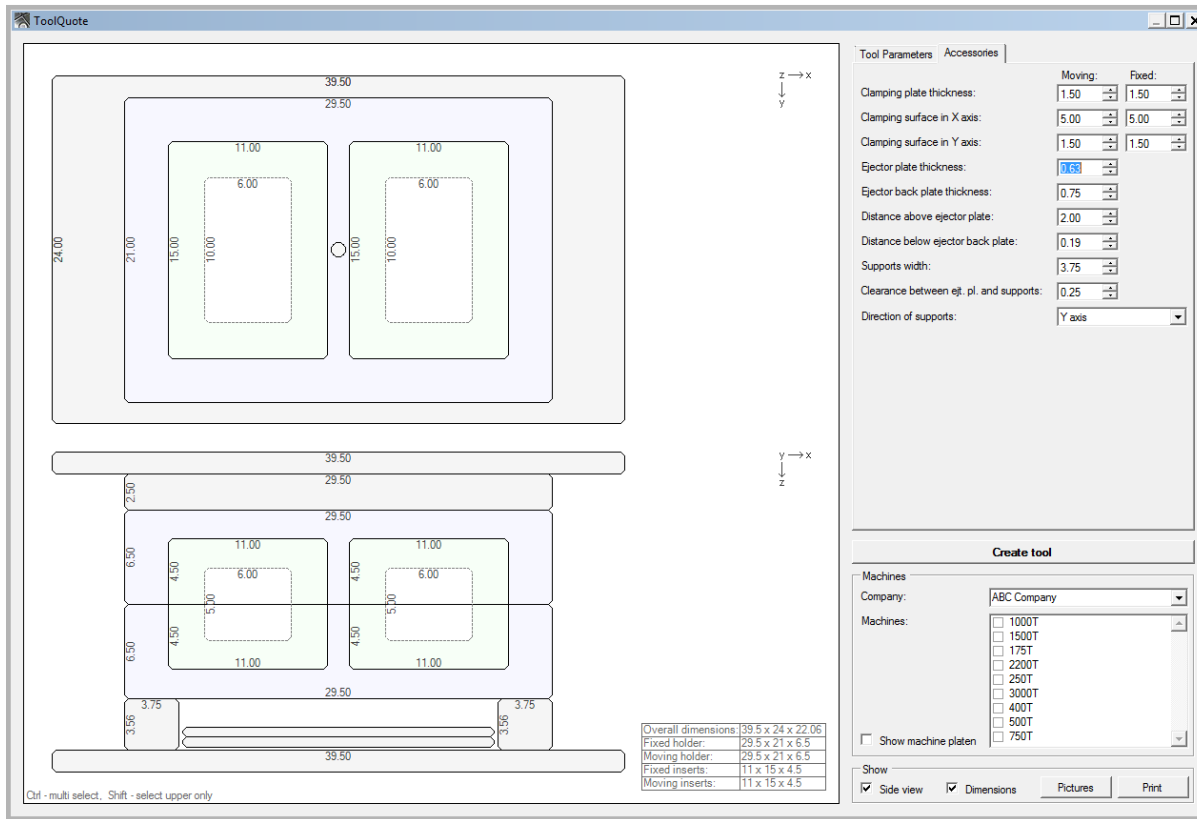
Show Side view Dimensions Pictures Print

Overall dimensions: 38.5 x 21.5 x 21.06
 Fixed holder: 36 x 19 x 6
 Moving holder: 36 x 19 x 6
 Fixed inserts: 14 x 11 x 4
 Moving inserts: 14 x 11 x 4

Ctrl - multi select, Shift - select upper only

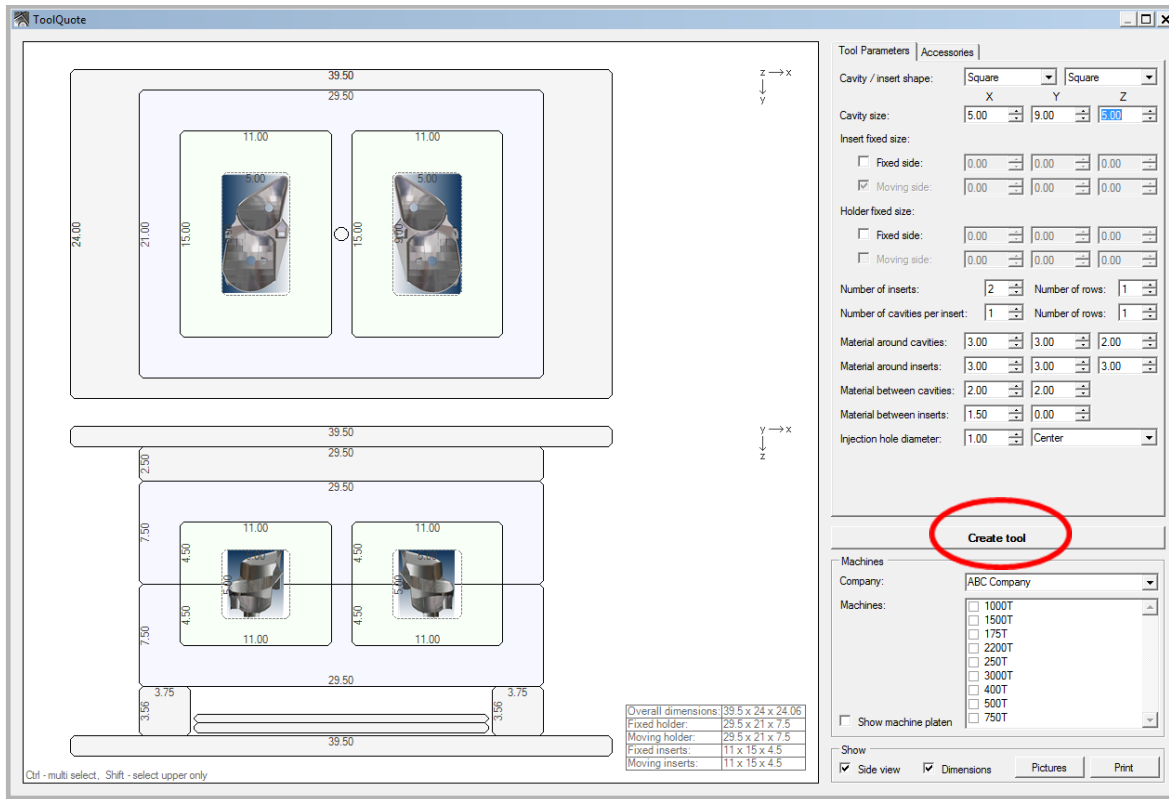
Step 4 - Here you can start entering the tool parameters such as part size, # of cavities, inserts, plate sizes, etc.

Initial sizes are pre-populated according to your profile defaults, but all sizing is changed instantly on the graphic layout as you make changes.



Step 5 - As you make inputs, the basic mold layout is generated & automatically updated.

Change as necessary, part sizes, plate sizes, # of cavities, ejection height, clamp plate overhang, part rotation, gate position, plus lots more!



Step 6 – Import photos of part as desired. Photos will be fit to cavity sizes already determined. And can be rotated and mirrored for handed parts.

Photos will also appear on your quote calculations.

Select 'Create Tool'

ToolQuote

Overall dimensions: 39.5 x 24 x 24.06
 Fixed holder: 29.5 x 21 x 7.5
 Moving holder: 29.5 x 21 x 7.5
 Fixed inserts: 11 x 15 x 4.5
 Moving inserts: 11 x 15 x 4.5

Ctrl - multi select. Shift - select upper only. Alt = disable automatic sizing

Create Sliders

Direction of slider: [Left] [Up] [Right] [Down] Z plane: [Up] [Down]

Slider dimensions: X: 18.50 Y: 4.50 Z: 2.50

Slider tip - size: 0.00

Angle pin - diameter: 0.00 Flange: 0.00

Hyd. cyl. - length: 0.00 Diameter: 0.00

Console - length: 0.00 Thickness: 0.00

Create slider

Move part: [0.00] [0.00] [0.00] [0.00] Z axis

Change dimensions: [0.00] [0.00] [0.00] [0.00] Z axis

Rotation: Rotate around Z axis: 0.00 Rotate around Y axis: 0.00 Rotate around X axis: 0.00

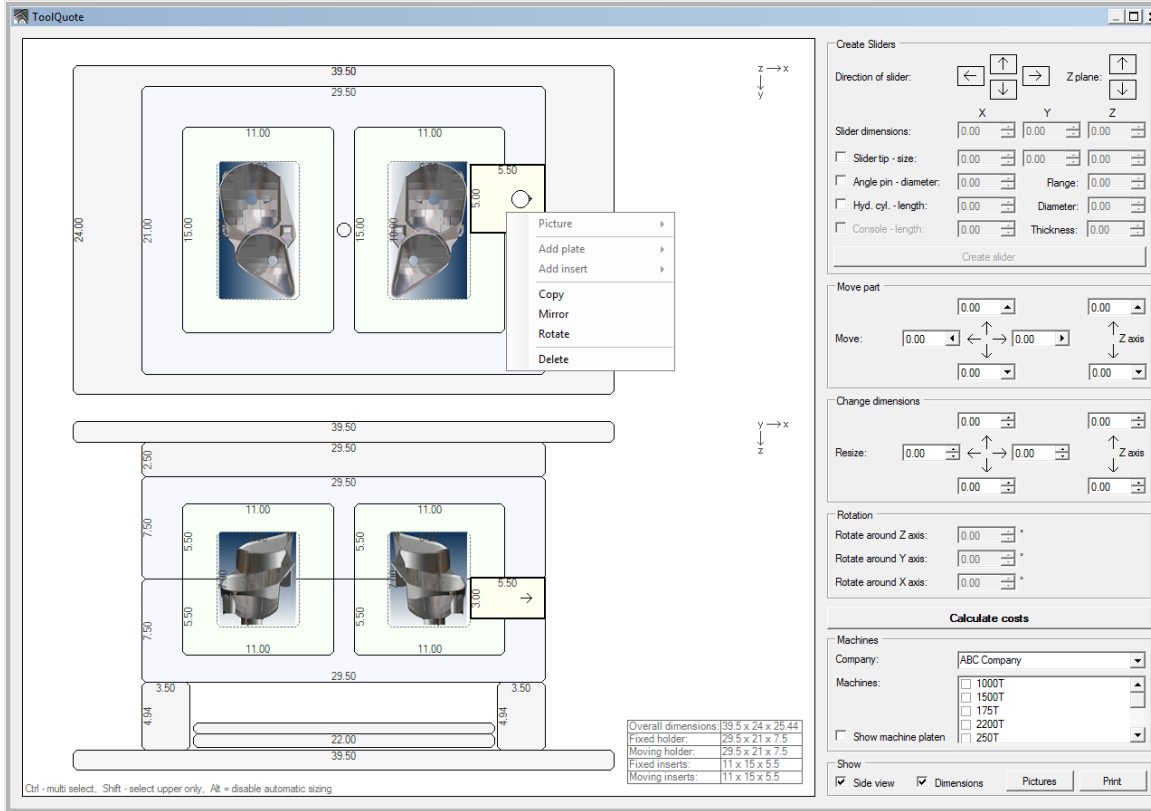
Calculate costs

Machines: Company: ABC Company

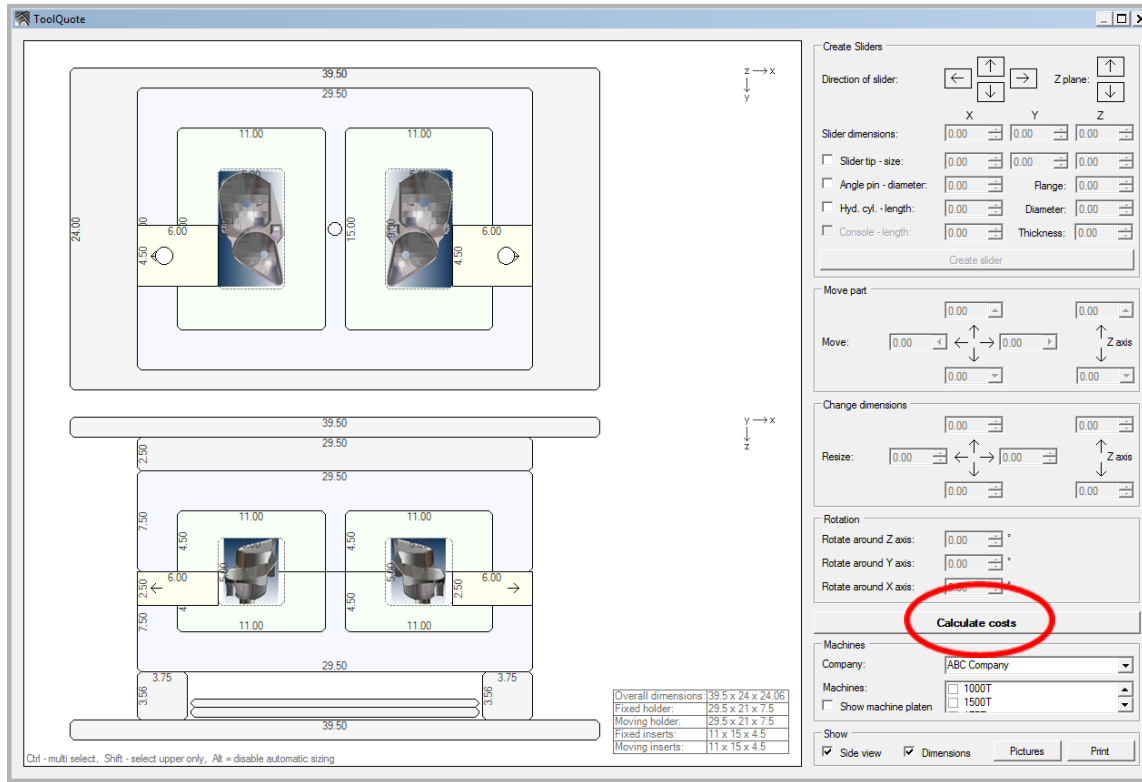
Machines: 1000T 1500T

Show Side view Dimensions Pictures Print

Step 7 – Add Slides. Slides can have a slider tip, be angle pinned or hydraulic.



Step 8 - Slides can be added to, copied, mirrored, rotated and positioned where needed. All slides will be added to bill of materials list.



Step 9 – Tool layout is shown with slides completed, optional ISO photo of part and optional press layout pattern to ensure tool fits on customer machine.

Click on 'Calculate Costs'

ToolQuote

Print calculation | Send by e-mail | Copy part | Change rate | Calculate costs | Delete part | External quote | Close

Status: Received

Quote #: 2016/021 | RFG #: RFG - 1250 | Client: In House | Description: Reflector Mold - H13 - 2 cav | Received: | Send by: | Files: Name | Changed | Calculation: 2016-021.pdf | 07/06/2... | JDL Quote template.xlsx | 08/06/2...

Calculation finished: | Quote sent: | Ordered: | Archive: | Follow up:

Tools:

Drawing #	Description	Tool profile	Part type	Complexity	Cavities	Sliders	Holder	Mat. cav.
131415	2 cav Reflector Mold - H13	H13 MOLD - Medium	Reflector	3	2	2	ExEt P20M (\$)	ExEt H13 Prem.

Tool positions / Materials:

Part	#	Pcs	Material	X	Y	Z	Weight/pc	Weight (lb)	Price/lb	Mat. costs	Hours/pc	Hours	Hourly rate	Price
CLAMPING PLATE FIXED SIDE	1	1	4140 Holder Bloc...	39.50	24.00	1.50	403.7	403.7	1.50	605.55	10	10	65.00	650.00
CLAMPING PLATE MOVING SID	1	1	4140 Holder Bloc...	39.50	24.00	1.50	403.7	403.7	1.50	605.55	10	10	65.00	650.00
EJECTOR BACK PLATE	1	1	4140 Holder Bloc...	21.50	21.00	0.75	96.1	96.1	1.50	144.15	8	8	65.00	520.00
EJECTOR PLATE	1	1	4140 Holder Bloc...	21.50	21.00	0.63	80.1	80.1	1.50	120.15	8	8	65.00	520.00
SUPPORT	1	1	4140 Holder Bloc...	3.75	21.00	3.56	79.7	79.7	1.50	119.55	8	8	65.00	520.00
SUPPORT	2	1	4140 Holder Bloc...	3.75	21.00	3.56	79.7	79.7	1.50	119.55	8	8	65.00	520.00
THIRD PLATE FIXED SIDE	1	1	4140 Holder Bloc...	29.50	21.00	2.50	439.7	439.7	1.50	659.55	10	10	65.00	650.00
ELECTRODES	4	4	POCO 2	12.00	12.00	0.50	4.8	19.2	9.38	180.08	25	100	65.00	6,500.00
LIFTERS - DOGHOUSE LG	4	4	ExEt H13 Premiu...	2.00	3.00	3.00	5.1	20.4	3.55	72.40	20	80	65.00	5,200.00
INSERT FIXED SIDE	2	2	ExEt H13 Premiu...	11.00	15.00	4.50	210.9	421.8	3.55	1,497.40	15	30	65.00	1,950.00
INSERT MOVING SIDE	2	2	ExEt H13 Premiu...	11.00	15.00	4.50	210.9	421.8	3.55	1,497.40	15	30	65.00	1,950.00
SLIDER	2	2	ExEt H13 Premiu...	6.00	4.50	2.50	19.2	38.4	3.55	136.32	12	24	65.00	1,560.00
							5,143.3	10,375.89			366		23,790.00	

Labour Hrs / Machine Hrs:

Labour / Machine	Comments	Hours	Hourly rate	Price
GUNDRILLING		35	70.00	2,450.00
MOLD FLOW SIMULATION		25	70.00	1,750.00
MOLDMAKING		300	65.00	19,500.00
MOLDMAKING - LEADER		200	75.00	15,000.00
TRAYOUT SAMPLING		24	70.00	1,680.00
WATER LINES		40	60.00	2,400.00
WIRE EDM		40	65.00	2,600.00
		1,444		97,430.00

Purchased items:

Description	Supplier	Comments	Pcs/units	Price/unit	Price
Identification Plaques			1	150.00	150.00
Laser Engraving (at \$250 / cavity)			2	250.00	500.00
Mold Counter			1	250.00	250.00
STRESS RELIEF			676.8	0.10	67.68
SUB CONTRACT			1	0.00	0.00
Transport - \$750			1	750.00	750.00
Tyout - 100 shots - 500T			3	950.00	2,850.00
					21,421.28

Summary

Material:	Price:	Profit:	Total:
10,375.89	10.00%	11,413.48	
Labour: 121,220.00	0.00%	121,220.00	
Purchased: 21,421.28	15.00%	24,634.15	
Total: 153,016.89	4,250.74	157,267.63	

Price ordered: 0.00

Dimensions: X: 39.50, Y: 24.00, Z: 24.06

Sliders: 2

Hrs: 1810

Weeks: 15

% for stress relief / heat treating: 75.00%

Material for stress relief / heat treating: 676.8

Comments for report: This is a sample report for demo purposes only

Sample quote for demo purposes

Step 10 - All tool positions and sizes are automatically generated.

MFG hours can be added or adjusted manually or can be calculated automatically from the tool profile.

Purchased items can also be added manually as needed or built in to the profiles for automatic inclusion.

Totals are shown including margins and overall mold sizing.

ToolQuote - Calculation 2016/021

Quote #: 2016/021
 Client: In House RFQ #: RFQ - 1250 Reflector Mold - H13 - 2 cav
 Description: 2 cav Reflector Mold - H13 Drawing: 131415
 Cavities: 2 Sliders: 2 Holder: ExEII P20M (\$1.75) Insert: ExEII H13 Premium (\$3.55)

TOOL POSITIONS	PCS	MATERIAL	DIMENSIONS	LB	P/LB	MAT	HOURS	RATE	LABOUR
HOLDER FIXED SIDE	1	ExEII P20M (...)	29.50 x 21.00 x 7.50	1,319.5	1.75	2,309.12	20	65.00	1,300.00
HOLDER MOVING SL...	1	ExEII P20M (...)	29.50 x 21.00 x 7.50	1,319.5	1.75	2,309.12	20	65.00	1,300.00
INSERT FIXED SIDE	2	ExEII H13 Pre...	11.00 x 15.00 x 4.50	421.8	3.55	1,497.40	30	65.00	1,950.00
INSERT MOVING SIDE	2	ExEII H13 Pre...	11.00 x 15.00 x 4.50	421.8	3.55	1,497.40	30	65.00	1,950.00
SLIDER	2	ExEII H13 Pre...	6.00 x 4.50 x 2.50	36.4	3.55	136.32	24	65.00	1,560.00
CLAMPING PLATE FL...	1	4140 Holder Bl...	39.50 x 24.00 x 1.50	403.7	1.50	605.55	10	65.00	650.00
CLAMPING PLATE M...	1	4140 Holder Bl...	39.50 x 24.00 x 1.50	403.7	1.50	605.55	10	65.00	650.00
EJECTOR BACK PLA...	1	4140 Holder Bl...	21.50 x 21.00 x 0.75	95.1	1.50	144.15	8	65.00	520.00
EJECTOR PLATE	1	4140 Holder Bl...	21.50 x 21.00 x 0.63	80.1	1.50	120.15	8	65.00	520.00
THIRD PLATE FIXED...	1	4140 Holder Bl...	29.50 x 21.00 x 2.50	439.7	1.50	659.55	10	65.00	650.00
SUPPORT 1	1	4140 Holder Bl...	3.75 x 21.00 x 3.56	79.7	1.50	119.55	8	65.00	520.00
SUPPORT 2	1	4140 Holder Bl...	3.75 x 21.00 x 3.56	79.7	1.50	119.55	8	65.00	520.00
ELECTRODES	4	POCO 2	12.00 x 12.00 x 0.50	19.2	9.38	180.00	100	65.00	6,500.00
LIFTERS - DOGHO...	4	ExEII H13 Pre...	2.00 x 3.00 x 3.00	20.4	3.55	72.40	80	65.00	5,200.00
				5,115.6		10,375.83	366		23,780.00

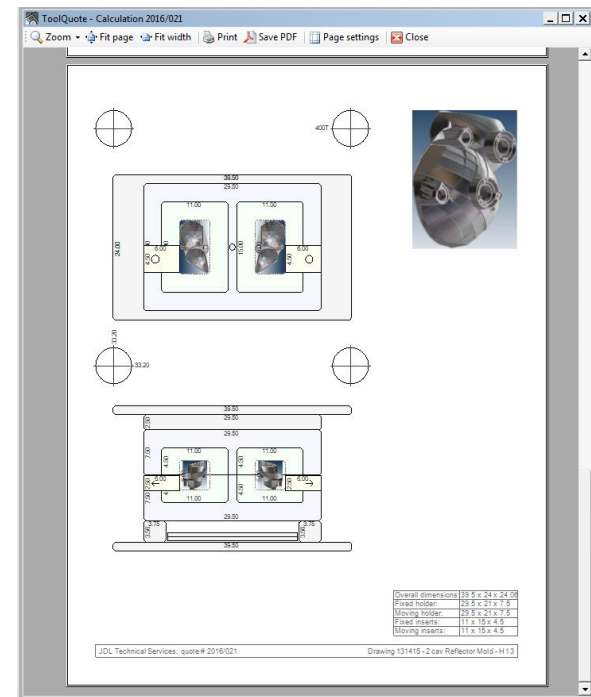
LABOUR HRS / MACHINE HRS	COMMENTS	HOURS	RATE	PRICE
BORING MILL		30	65.00	1,950.00
CAD DESIGN		120	70.00	8,400.00
CAM PROGRAMMING		180	70.00	12,600.00
CMM MEASUREMENT REPORT		40	60.00	2,400.00
CNC MACHINING		226	70.00	15,780.00
DRILLING		30	65.00	1,950.00
EDM		80	60.00	4,800.00
FITTING / SPOTTING / ASSEMBLY		75	60.00	4,500.00
GUNDRILLING		35	70.00	2,450.00
MOLD FLOW SIMULATION		25	70.00	1,750.00
MOLDMAKING		300	65.00	19,500.00
MOLDMAKING - LEADER		200	75.00	15,000.00
TRYOUT SAMPLING		24	70.00	1,680.00
WATER LINES		40	60.00	2,400.00
WIRE EDM		40	65.00	2,600.00
		1,444		97,430.00

PURCHASED ITEMS	SUPPLIER	COMMENTS	PCS	PIPC	PRICE
Checking Fixture (12c)			1	12,000.00	12,000.00
Components (ejection, guides, water, etc)			1	3,500.00	3,500.00
HEAT TREATING			676.8	2.00	1,353.60
Identification Plaques			1	150.00	150.00
Laser Engraving (at \$250 / cavity)			2	250.00	500.00
Mold Counter			1	250.00	250.00
STRESS RELIEF			676.8	0.10	67.68
SUB CONTRACT			1	0.00	0.00
Transport - \$750			1	750.00	750.00
Tryout - 100 shots - 500T			3	950.00	2,850.00
					21,421.28

SUMMARY	PRICE	PROFIT	TOTAL	DIMENSIONS	35.50 x 24.00 x 24.06
MATERIAL	10,375.89	10%	11,413.48	CAVITIES	2
LABOUR	121,220.00	0%	121,220.00	SLIDERS	2
PURCHASED	21,421.28	15%	24,634.47	HRS	1,810
TOTAL	153,017.17		157,267.95	WEEKS	15
				STRESS RELIEF / HEAT TREATING	676.8 (75%)

Quote # 2016/021, drawing 131415 - 2 cav Reflector Mold - H13 Page 1

Overview of all costs readily available as well as tool layout on print calculation.




Additional tools can be added to the quote.
Quote history is recorded after every, revision, email, printing, etc.

Add quote conditions by selecting from a pre-determined list or add & adjust as necessary.

Quote conditions:
 Terms - 30%down payment, 30% on steel order, 30% on first shots, final 10% after approvals.
 Prices are valid for 60 days.
 Thank you for the opportunity to quote this project.
 In this area, you have the choice to select from a drop down menu of various user defined quote conditions that may be applicable to the customer you are working with.
 Quotations shown are quick examples providing during a demo for _____ on _____. Calculation were only to represent how ToolQuote handles the process.
 Please don't hesitate to ask any questions that you may have.

ToolQuote - Quote 2016/021

Zoom Fit page Fit width Print Save PDF Page settings Close



519-919-7391
ToolQuote@JDLTech.ca
www.JDLTech.ca

QUOTE # : 2016/021
 RFQ # : RFQ - 1250
 DATE : 2016-08-18
 CLIENT : In House

#	DRAWING	DESCRIPTION	DIMENSIONS	CAV	SLD	WEEKS	PRICE USD
1	131415	2 cav Reflector Mold - H13 Quoted to customer standards	39.50 x 24.00 x 24.06	2	2	15	157,280.02
2	131415	2 cav Reflector Mold - H13 Capacity Tooling - CNC/CAM Hours removed	39.50 x 24.00 x 25.34	2	2	13	136,472.50

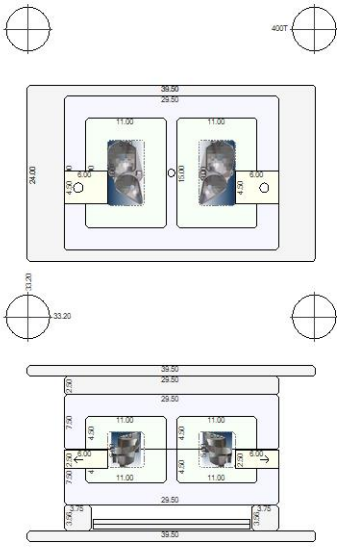
QUOTE CONDITIONS


Terms - 30% down payment, 30% on steel order, 30% on first shot, final 10% after approvals.
 Prices are valid for 60 days.
 Thank you for the opportunity to quote this project.
 In this area, you have the choice to select from a drop down menu of various user defined quote conditions that may be applicable to the customer you are working with.
 Quotations shown are quick examples provided during a demo for _____ on _____. Calculation were only to represent how ToolQuote handles the process.
 Please don't hesitate to ask any questions that you may have.

Quote # 2016/021, rfq # RFQ - 1250 Page 1

ToolQuote - Quote 2016/021

Zoom Fit page Fit width Print Save PDF Page settings Close





Overall dimensions	39.5 x 24 x 24.06
Fixed holder	29.5 x 21 x 7.5
Moving holder	29.5 x 21 x 7.5
Fixed inserts	11 x 15 x 4.5
Moving inserts	11 x 15 x 4.5

JDL Technical Services, quote # 2016/021 Drawing 131415 - 2 cav Reflector Mold - H13

Quote can be previewed along with tool layout before printing or emailing as a PDF file. If changes need to be made, you can easily go back to calculation and make edits.

Compare tools

Print selection E-mail selection Copy quote **Find by pictures** Export data Import data Close

Quote/project: [] Date from: 26/02/2016 Dimension X: [] +/- 10 % Cavities: [] Material lb: [] +/- 10 %
 Client: [] Date to: 26/05/2016 Dimension Y: [] +/- 10 % Sliders: [] Hrs.: [] +/- 10 %
 Realized only [x] Include archive [] Drawing #: [] Dimension Z: [] +/- 10 % Complexity: [] Part type: []

Quote #	Client	Part	Part type	Dimensions	Cavit...	Slid...	Mat. lb	Complex...	Quote s...	Hrs.	Total cost	Projec...	Hrs.	Labour	Material	Purchased	Costs	Sale	Profit	Profi...
2015/041	ABC Company	4 cav cap & lid	Class 101	20.50 x 27.50 x 20.06	4		2,966.1	2	07/03/20...	964	94,498.95	1290	928	62,250.00	6,050.00	24,800.00	93,100.00	97,950.00	4,850.00	5 %
2015/041	ABC Company	12 cav cup	Class 102	55.00 x 27.00 x 24.41	12		8,858.3	2	07/03/20...	1,440	156,320.71	1289	1,475	102,600.00	15,975.00	38,900.00	157,475.00	163,000.00	5,525.00	3 %
2015/041	ABC Company	12 cav cup - Capacity Tooling	Class 102	55.00 x 27.00 x 24.41	12		8,858.3	2	07/03/20...	1,265	144,070.71	1288	1,225	84,950.00					675.00	8 %
2015/040	ABC Company	16 cav	Class 102	34.48 x 20.98 x 21.31	16	8	3,641.6	2		2,345	241,153.12	1287	2,395	165,600.00					600.00	-7 %
2015/035	ABC Company	sample 2 cav	12-24" part	34.50 x 22.50 x 23.56	2		4,724.5	2	29/07/20...	742	81,623.25	1285	715	46,500.00					300.00	9 %
2015/033	ABC Company	RA demo	12-24" part	53.00 x 16.00 x 22.69	2	6	4,137.2	3	15/06/20...	1,763	127,639.82	1284	1,648	109,400.00					750.00	4 %
2014/009	ABC Company	small	Class 102	18.50 x 16.50 x 15.56	4	4	978.5	1	12/09/20...	500	37,552.97	1282	526	44,500.00					900.00	-11 %
2014/009	ABC Company	6x6x4 p20	6-12" part	22.20 x 19.40 x 19.06	1	1	2,441.3	4	12/09/20...	742	65,553.71	1280	775	63,500.00					200.00	-7 %
2015/021	ABC Company	2 cav bezel 1+1	Decorative	40.00 x 22.90 x 31.56	2	6	7,855.0	3	31/03/20...	1,663	154,660.51	1280	1,300	85,000.00					000.00	4 %
2014/009	ABC Company	6x6x4 H13	6-12" part	32.50 x 21.50 x 23.06	2		4,009.8	4	12/09/20...	1,306	119,368.57	1279	1,360	108,000.00					600.00	-3 %
2014/038	DEF Company	sample part	Class 101	20.50 x 18.00 x 16.31	4		1,543.1	3	24/11/20...	535	41,967.90	1276	575	38,400.00					700.00	4 %
2014/014	ABC Company	higher complex	12-24" part	44.50 x 23.50 x 35.81	2	6	9,016.0	4	19/08/20...	1,437	119,659.58	1272	1,410	110,000.00					091.00	2 %
2014/003	ABC Company	small part	6-12" part	24.50 x 22.00 x 16.50	4	8	2,435.0	3	12/09/20...	707	65,803.64	1266	740	47,000.00					500.00	-4 %
2014/011	ABC Company	2 cav P20 high compl 9" part	6-12" part	36.00 x 20.00 x 25.81	2		4,134.6		17/10/20...	1,396	104,124.42	1265	840	62,250.00					625.00	3 %
2014/038	DEF Company	Capacity tooling part	Class 101	20.50 x 18.00 x 16.31	4		1,543.1	3	24/11/20...	485	38,467.90	1258	480	31,050.00					550.00	2 %

Find by pictures

Database allows for quick filtering of previous quotes.

Using the Compare Tools function you can find and compare existing quotes from the database as well as add actual costs of manufactured tools to the corresponding quote for comparison.

'Find by Pictures' makes for very quick searches!

Tool profiles

Create new tool profile | Print tool profiles | Delete tool profile | Copy tool profile | Export data | Import data

Tool profiles:

Name	Type
DME 1718-2323	Plastic
ENGINEERING CHANGE	Plastic
H13 MOLD - Large	Plastic
H13 MOLD - Medium	Plastic
High Cavitation Mold - double slides	Plastic
High Cavitation Mold SS - 32 cav	Plastic
High Cavitation Mold SS- C/C - 64 cav	Plastic
High Cavitation SS Stack Mold	Plastic

Tool positions / Materials | Labour / Machines | Purchased items | Graphic calculation

Order	Name	Default material	Default hrs	Default rate	Use for heat treating / stress relief
1	HOLDER FIXED SIDE	ExEl P20M (\$1.75)	20		<input type="checkbox"/>
2	HOLDER MOVING SIDE	ExEl P20M (\$1.75)	20		<input type="checkbox"/>
3	INSERT FIXED SIDE	ExEl H13 Premium (\$3.55)	15		<input checked="" type="checkbox"/>
4	INSERT MOVING SIDE	ExEl H13 Premium (\$3.55)	15		<input checked="" type="checkbox"/>
6	SLIDER	ExEl H13 Premium (\$3.55)	12		<input checked="" type="checkbox"/>
7	SLIDER TIP	ExEl H13 Premium (\$3.55)	8		<input checked="" type="checkbox"/>
8	CLAMPING PLATE FIXED SIDE	4140 Holder Block (\$1.50)	10		<input type="checkbox"/>
9	CLAMPING PLATE MOVING SIDE	4140 Holder Block (\$1.50)	10		<input type="checkbox"/>
10	EJECTOR BACK PLATE	4140 Holder Block (\$1.50)	8		<input type="checkbox"/>
11	EJECTOR BOX	4140 Holder Block (\$1.50)	20		<input type="checkbox"/>
12	EJECTOR PLATE	4140 Holder Block (\$1.50)	8		<input type="checkbox"/>
	CONSOLE	4140 Holder Block (\$1.50)	6		<input type="checkbox"/>
	EXTRA EJECTOR PLATE	4140 Holder Block (\$1.50)	8		<input type="checkbox"/>

Close

Tool positions / Materials | Labour / Machines | Purchased items | Graphic calculation

Order	Name	Default hrs	Default rate
	BORING MILL	30	65.00
	CAD DESIGN	120	70.00
	CAM PROGRAMMING	180	70.00
	CMM MEASUREMENT REPORT	40	60.00
	CNC MACHINING	225	70.00
	DRILLING	30	55.00
	EDM	80	60.00
	FITTING / SPOTTING / ASSEMBLY	75	60.00
	GUNDRILLING	35	70.00
	MOLD FLOW SIMULATION	25	70.00
	MOLDMAKING	300	65.00
	MOLDMAKING - LEADER	200	75.00
	TRYOUT SAMPLING	24	70.00
	WATER LINES	40	60.00
	WIRE EDM	40	65.00

Tool positions / Materials | Labour / Machines | Purchased items | Graphic calculation

Order	Name	Supplier	Pcs / units	Price per unit	Use for heat treating / stress relief
	HYDRAULIC CYLINDER			600.00	<input type="checkbox"/>
	Checking Fixture (12K)		1	12,000.00	<input type="checkbox"/>
	Components (ejection, guides, water, etc)		1	3,500.00	<input type="checkbox"/>
	HEAT TREATING		1	2.00	<input checked="" type="checkbox"/>
	Identification Plaques		1	150.00	<input type="checkbox"/>
	Laser Engraving (at \$250 / cavity)		2	250.00	<input type="checkbox"/>
	Mold Counter		1	250.00	<input type="checkbox"/>
	STRESS RELIEF		1	0.10	<input checked="" type="checkbox"/>
	SUB CONTRACT				<input type="checkbox"/>
	Transport - \$750		1	750.00	<input type="checkbox"/>
	Tryout - 100 shots - 500T		3	950.00	<input type="checkbox"/>

Tool positions / Materials | Labour / Machines | Purchased items | Graphic calculation

Tool Parameters

Cavity / insert shape:

Cavity size: X: 8.00, Y: 5.00, Z: 4.00

Insert fixed size:

Moving side:

Holder fixed size: Fixed side:

Moving side:

Number of inserts: Number of rows:

Number of cavities per insert: Number of rows:

Material around cavities:

Material around inserts:

Material between cavities:

Material between inserts:

Injection hole diameter:

Accessories

Moving: Fixed:

Clamping plate thickness:

Clamping surface in X axis:

Clamping surface in Y axis:

Ejector plate thickness:

Ejector back plate thickness:

Distance above ejector plate:

Distance below ejector back plate:

Supports width:

Clearance between ejt. pl. and supports:

Direction of supports:

Extra fixed plates thickness:

Extra moving plates thickness:

Completely Customizable Profile
Screens to organize settings
to the way you are used to working.

Key Features of ToolQuote

Simple to Setup & Use

Auto Tool Layout Creation

Automate & Organize Your Quotes

Automatic Calculation of Steel Sizes and Costs

Print & Email Quotes Directly from ToolQuote

Add Actual Costs for Future Comparison

Filter and Compare Past Quotes

Add Photos to Tool Layout

User Definable Database

Questions? Want more info?

Send an e-mail to:

Info@JDLTech.ca

Visit our website

www.JDLTech.ca

JDL Technical Services

Windsor, Ontario

519-919-7391

Also Available!



Digital Time Clock

**Track Employee
Hours, by Job &
Operation for
Payroll, Job
Scheduling,
Estimating and
Progress Reports**

TOOL QUOTE
INTERACTIVE QUOTING FOR TOOLMAKERS

JDLTech.ca
JDL Technical Services

TOOL MASTER

INTELLIGENT AUTOMATED CNC MACHINING

ToolMaster - Windows based program that automates CNC machining by intelligently monitoring and managing the condition of cutting tools during CNC machining.

Run Your CNC Machine
WITHOUT
Operator Intervention

TOOL QUOTE
INTERACTIVE QUOTING FOR TOOLMAKERS

JDLTech.ca
JDL Technical Services

FREE

Machine Burden Rate Calculator

Just for asking!

***KNOW What Your Machines are
Costing You!***

Recent Articles

Moldmakers, Those 'FREE ESTIMATES'
You Provide
How Much Are They Costing You?



ONLY 2 HOURS

Send Out Quotes using ToolQuote with
Only 2 Hours Training! REALLY??

TOOL QUOTE
INTERACTIVE QUOTING FOR TOOLMAKERS

JDLTech.ca
JDL Technical Services